

CAYMAN ISLANDS



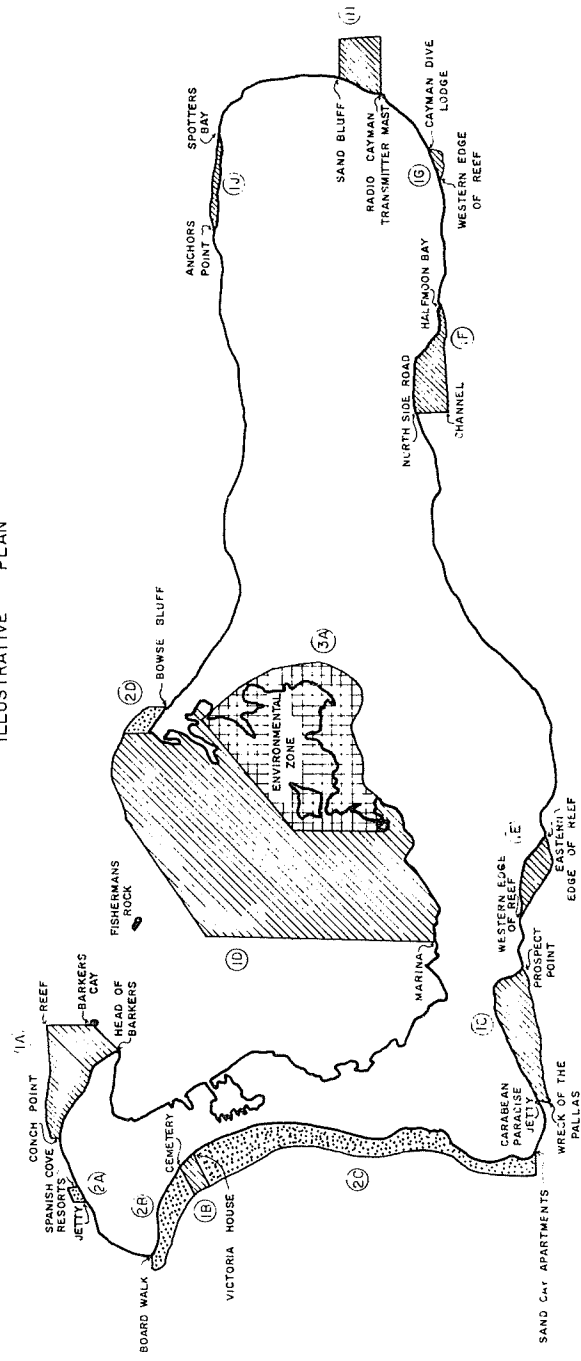
COURTS OFFICE LIBRARY

Supplement No. 1 printed with Extraordinary Gazette of
Friday 21st February, 1986

**MARINE CONSERVATION LAW, 1978
(LAW NO. 19 OF 1978)**

**THE MARINE CONSERVATION (MARINE
PARKS)
REGULATIONS, 1986.**

MARINE PARKS
GRAND CAYMAN
FOURTH SCHEDULE
ILLUSTRATIVE PLAN



SCALE - 1:150,000

MARINE PARK

REPLENISHMENT ZONE

ENVIRONMENTAL ZONE

8
Thence continuing in a north westerly direction for a distance of approximately 5,100 feet to reach the starting point.

Made by the Governor in Council this 18th day of February, 1986.

JENNY MANDERSON
Clerk of the Executive Council.

MARINE CONSERVATION LAW, 1978
(LAW NO. 19 OF 1978)

THE MARINE CONSERVATION (MARINE PARKS)
REGULATIONS, 1986.

In exercise of the powers conferred upon the Governor in Council by sections 11 and 24 of the Marine Conservation Law, 1978, the following Regulations are hereby made.

- | | |
|-----------------------------|--|
| Citation and commencement. | 1. These Regulations may be cited as the Marine Conservation (Marine Parks) Regulations, 1986, and shall come into operation on 1st March 1986. |
| Definitions. | 2. In these regulations, unless the context otherwise requires -

“cast net” means any net cast by hand by one individual;
“drop off” means the first part of the sea floor to attain not less than 80 feet in depth on a line proceeding from and at right angles to the shore;
“fry” means any small silver fish under three inches in length of the herring (clupeidae) or anchovy (engraulidae) families;
“fry net” means any net or device designed for catching fry;
“spear gun” means any device whereby a harpoon, rod, spear or other projectile may be impelled through water; and
“sprat” means any small silver fish under six inches in length of the herring (clupeidae) or anchovy (engraulidae) families. |
| Categories of marine parks. | 3. For the purposes of determining what restrictions shall apply to areas designated as marine parks, there shall be three categories of marine parks, namely:

(a) replenishment zones;
(b) marine park zones; and
(c) environmental zones. |
| Replenishment zones. | 4. The following are prohibited in replenishment zones:
(a) the taking of conch and lobster;
(b) the use of spear guns, fish traps and fish nets of all kinds, except that fry and sprat may be taken with fry or cast nets. |

2

Marine park zones.	<p>5. (1) Subject to sub-regulations (2) and (3), the following are prohibited in marine park zones;</p> <p>(a) the taking of any form of marine life by any means;</p> <p>(b) the anchoring of boats.</p> <p>(2) Notwithstanding sub-regulation (1) the taking of fish is permitted in the following circumstances:</p> <p>(a) by line, at or behind the drop-off;</p> <p>(b) by line from the shore, without the use of a boat;</p> <p>(c) by use of fry or cast nets, where the fish taken are fry or sprat.</p> <p>(3) Notwithstanding sub-regulation (1) anchoring is permitted in the following circumstances:</p> <p>(a) by boats not exceeding 60 feet in length provided that they do not use grappling hooks, anchor only in sand and their anchor chain or rope does not lie upon coral;</p> <p>(b) by all boats in port anchorage areas designated as such by the Port Regulations.</p>	7
Envrionmental zones.	<p>6. The following are prohibited in environmental zones:</p> <p>(a) the taking of any form of marine life by any means;</p> <p>(b) the use of any anchor;</p> <p>(c) entry by any person into the water;</p> <p>(d) exceeding a speed of five knots.</p>	
Emergency anchoring.	<p>7. No prohibition on anchoring imposed by these regulations shall apply during a declared state of emergency, during the currency of a hurricane warning or when permission is given by the Port Director to a specific vessel in circumstances which in the opinion of the Port Director constitute an emergency.</p>	
Designation of zones.	<p>8. (1) The areas described in the First Schedule are designated as replenishment zones.</p> <p>(2) The areas described in the Second Schedule are designated as marine park zones.</p> <p>(3) The areas describerd in the Third Schedule are designated as environmental zones.</p> <p>(4) The above areas are shown on the plan in the Fourth Schedule. That plan is for illustrative purposes only, and in the event of any discrepancy between the plan and the written descriptions contained in the First, Second or Third Schedules, the description in the relevant Schedule shall prevail.</p>	
Commission of offences.	<p>9. In the case of the contravention of any of these regulations in circumstances which involve the use of a boat, all persons in the boat at the time of the contravention shall be deemed to be responsible therefore, and shall be liable for the contravention as principal offenders.</p>	<p>Thence in a north westerly direction along the reef for a distance of approximately 5,000 feet to approximate longitude 81° 16' 19" west, approximate latitude 19° 22' 44" north, thence in a southerly direction for a distance of approximately 2,200 feet to reach the coast at Rum Point, Block No. 33B Parcel No. 171(e) at approximate longitude 81° 16' 19" west, approximate latitude 19° 22' 22" north.</p> <p>Thence in a south easterly direction along the coast to reach the starting point.</p> <div><div>THIRD SCHEDULE</div><div>ENVIRONMENTAL ZONES</div></div> <p>3A Little Sound</p> <p>Starting on the coast at Block No. 33 D Parcel No. 21 approximate longitude 81° 16' 07" west approximate latitude 19° 21' 33" north. Thence in a south westerly direction for approximately 14,500 feet to a point 1,300 feet off the west coast of Booby Cay approximate longitude 81° 17' 57" west, approximate latitude 19° 19' 54" north.</p> <p>Thence in a southerly direction for a distance of approximately 8,400 feet to reach the western coast of Duck Pond Cay approximate longitude 81° 17' 57" west, approximate latitude 19° 18' 31" north.</p> <p>Thence along the southern boundary of Duck Pond Cay and across the water way and along the southern boundary of Block No. 30A Parcel No. 5 to reach approximate longitude 81° 17' 26" west, approximate latitude 19° 18' 40" north.</p> <p>Thence inland in a generally north easterly direction parallel to the coast through Block Nos. 30A, 29A, 35A, and 41A approximately 2000 feet from the coast to reach a point in Block No. 41A approximate longitude 81° 15' 09" approximate latitude 19° 19' 21" north.</p> <p>Thence in a north westerly direction for approximately 1,800 feet over Block No. 41A, approximately 2,000 feet from the coast to reach approximate longitude 81° 15' 11" west, approximate latitude 19° 19' 31" north. Thence continuing in a north westerly direction for a distance of approximately 1,900 feet throughy Block No. 41A and into Block No. 40A approximately 2,000 feet from the coast to reach approximate longitude 81° 15' 12" west approximate latitude 19° 20' 04" north.</p> <p>Thence continuing in a north westerly direction through Block No. 40A for approximately 1,900 feet, approximately 1,000 feet from the coast to reach approximate longitude 81° 15' 21" west, approximate latitude 19° 20' 36" north.</p> <p>Thence continuing in a north westerly direction for a distance of approximately 2,300 feet through Block No. 40A, approximately 800 from the coast to reach approximate longitude 81° 15' 32" west, approximate latitude 19° 20' 55" north.</p>

SECOND SCHEDULE MARINE PARK ZONES

2A Spanish Cove Resort - Jetty (3D 16)

Starting on the coast at the north east corner of Block No. 3D Parcel No. 22 approximate longitude, 81° 23' 40" west, approximate latitude 19° 23' 40" north, thence due north for a distance of approximately 900 feet to the drop-off approximate longitude 81° 23' 40" west, approximate latitude 19° 23' 49" north.

Thence along the drop-off in a south westerly direction for a distance of approximately 1,250 feet to reach approximate longitude 81° 23' 52" west, approximate latitude 19° 23' 43" north, thence due south for a distance of approximately 700 feet to reach the jetty on the coast, at the northern boundary of Block No. 3D Parcel No. 16 approximate longitude 81° 23' 52" west, approximate latitude 19° 23' 36" north.

Thence in a north easterly direction along the coast to reach the starting point.

2B North West Point - West Bay Cemetery

Starting on the coast at the boardwalk on the north west boundary of Block No. 2C Parcel No. 67 approximate longitude 81° 25' 13" west, approximate latitude 19° 22' 20" north.

Thence in a westerly direction for approximately 1500 feet to reach the drop-off approximate longitude 81° 25' 23" west approximate latitude 19° 22' 20" north.

Thence along the drop-off in a south easterly direction for a distance of approximately 8,500 feet, to reach approximate longitude 81° 24' 09" west approximate latitude 19° 21' 43" north, thence in a north easterly direction for a distance of approximately 2,500 feet to reach the coast at the north west corner of the cemetery Block No. 5C Parcel No. 124 approximate longitude 81° 23' 49" west approximate latitude 19° 21' 56" north.

Thence in a north westerly direction along the coast to reach the starting point.

2C Victoria House - Sand Cay Apartments

Starting on the coast at the south west corner of Victoria House Block No. 10E Parcel No. 2 approximate longitude 81° 23' 26" west approximate latitude 19° 21' 35" north, thence in a south westerly direction for a distance of approximately 2,800 feet to reach the drop-off approximate longitude 81° 23' 50" west approximate latitude 19° 21' 22" north.

Thence in a southerly direction along the drop-off for approximately 32,500 feet to reach approximate longitude 81° 23' 46" west approximate latitude 19° 16' 10" north, thence in an easterly direction for approximately 1,600 feet to reach the coast at the north west corner of Sand Cay apartments Block No. 7D Parcel No. 8, approximate longitude 81° 23' 30" west approximate latitude 19° 16' 10" north.

Thence along the coast in a generally northerly direction to reach the starting point.

2D Bowse Bluff - Rum Point

Starting on the coast at Bowse Bluff Block No. 33C Parcel No. 12 approximate longitude 81° 15' 44" west, approximate latitude 19° 21' 57" north, thence in a northerly direction for a distance of approximately 1,200 feet to the reef approximate longitude 81° 15' 44" west, approximate latitude 19° 22' 09" north.

FIRST SCHEDULE REPLENISHMENT ZONES

1A Head of Barkers - Flats.

Starting on the coast the north east corner of Block No. 16A Parcel No. 21, approximate longitude 81° 21' 43" west, approximate latitude 19° 22' 51" north, thence in a north easterly direction for a distance of approximately 3,200 feet to reach the western boundary of Vidal Cay Block No. 16A Parcel No. 26 approximate longitude 81° 21' 14" west, approximate latitude 19° 23' 06" north.

Thence in a northerly direction for a distance of approximately 3,600 feet to reach the outer edge of the reef at approximate longitude 81° 21' 43" west, approximate latitude 19° 23' 43" north, thence in a north westerly direction along the outer edge of the reef for a distance of approximately 14,000 feet to reach approximate longitude 81° 23' 19" west, approximate latitude 19° 24' 00" north, thence southerly for a distance of approximately 1,200 feet to reach the coast at Conch Point Block No. 8A Parcel No. 7 approximate longitude 81° 23' 19" west, approximate latitude 19° 23' 48" north.

Thence in a south easterly direction along the coast to reach the starting point.

1B West Bay Cemetery - Victoria House.

Starting on the coast at the north west corner of the cemetery Block No. 5C Parcel No. 124 approximate longitude 81° 23' 49" west, approximate latitude 19° 21' 56" north, thence in a south westerly direction for a distance of approximately 2,500 feet to the drop off approximate longitude 81° 24' 09" west, approximate latitude 19° 21' 43" north.

Thence in a southerly direction along the drop off for a distance of approximately 2,800 feet to reach approximate longitude 81° 23' 50" west, approximate latitude 19° 21' 22" north, thence in a north easterly direction for approximately 2,800 feet to reach the coast at the south west corner of Victoria House Block No. 10E Parcel No. 2 approximate longitude 81° 23' 26" west, approximate latitude 19° 21' 35" north. Thence in a north westerly direction along the coast to reach the starting point.

1C South Sound

Starting on the coast at the Jetty on the southern boundary of Block No. 150 Parcel No. 63 (Caribbean Paradise) approximate longitude 81° 22' 44" west, approximate latitude 19° 15' 59" north, thence in a southerly direction for approximately 1,000 feet crossing the west side of the wreck of the Pallas to reach the outer edge of the reef at approximate longitude 81° 22' 44" west, approximate latitude 19° 15' 49" north.

Thence along the outer edge of the reef in a north easterly direction for approximately 14,000 feet to reach the coast at Prospect Point Block No. 23C Parcel No. 56 approximate longitude 81° 20' 2" west, approximate latitude 19° 16' 17" north.

Thence along the coast in north westerly, westerly and south westerly directions to reach the starting point.

1D North Sound

Starting at Rum Point Block No. 33B Parcel No. 171 (e) approximate longitude 81° 16' 19" west, approximate latitude 19° 22' 22" north, thence in a northerly direction for a

4

distance of approximately 2,200 feet to the reef approximate longitude 81° 16' 19" west approximate latitude 19° 22' 44" north.

Thence in a westerly direction along the outer edge of the reef for a distance of approximately 8,000 feet to reach approximate longitude 81° 17' 41" west, approximate latitude 19° 22' 43" north. Thence in a south westerly direction crossing to the east of Rum Point channel, for a distance of approximately 14,400 feet to reach approximate longitude 81° 19' 41" west, approximate latitude 19° 21' 16" north.

Thence in a southerly direction for a distance of approximately 21,500 feet to reach the coast at the north east corner of Block No. 24B Parcel No. 2 approximate longitude 81° 19' 41" west, approximate latitude 19° 17' 44" north.

Thence in a generally north easterly direction along the coast passing through Block Nos. 24B, 24C, 27B, 27C and part of 30A to reach the common boundary of Block No. 30A Parcels Nos. 5 and 8 at approximate longitude 81° 17' 26" west, approximate latitude 19° 18' 40" north.

Thence in westerly, south westerly and north westerly directions along the coast and across the waterway to the southern boundary of Duck Pond Cay approximate longitude 81° 17' 57" west, approximate latitude 19° 18' 31" north.

Thence in a northerly direction along the west coast of Duck Pond Cay and through the North Sound for a distance of approximately 8,400 ft. to a point 1,300 feet west of Booby Cay, approximate longitude 81° 17' 57" west, approximate latitude 19° 19' 54" north.

Thence in a north easterly direction for a distance of approximately 14,500 feet to reach the coast at Block No. 33D Parcel No. 21, approximate longitude 81° 16' 07" west, approximate latitude 19° 21' 33" north.

Thence along the coast line of Block No. 33E to reach approximate longitude 81° 16' 19" west, approximate latitude 19° 21' 45" north.

Thence in a westerly direction across part of North Sound to reach the coast at Water Cay Block No. 33E Parcel No. 75.

Thence along the coast through Block Nos. 33E, 33M, and 33B to reach the starting point.

1E Bats Cave Beach

Starting on the coast at the eastern boundary of Block No. 25B Parcel No. 8 where the reef meets the land, approximate longitude 81° 19' 27" west, approximate latitude 19° 16' 22" north, thence along the outer edge of the reef in south easterly, easterly and north easterly directions for a distance of approximately 6,700 feet to reach the coast at Head of Reef Block No. 28E Parcel No. 23 approximate longitude 81° 18' 22" west, approximate latitude 19° 16' 11" north.

Thence in north westerly and westerly directions along the coast to reach the starting point.

5

1F Frank Sound

Starting on the coast at the southern boundary of Block No. 56C Parcel No. 1 approximate longitude 81° 10' 59" west, approximate latitude 19° 18' 00" north, thence in a south easterly direction for approximately 3,100 feet to the channel, approximate longitude 81° 10' 55" west, approximate latitude 19° 17' 30" north. Thence along the outer edge of the reef in an easterly direction for approximately 11,000 feet to reach the coast at Block No. 64A Parcel No. 27 approximate longitude 81° 09' 00" west, approximate latitude 19° 17' 39" north.

Thence along the coast in a generally north westerly direction to reach the starting point.

1G Cayman Dive Lodge

Starting on the coast at the southern boundary of Block No. 72B Parcel No. 17 where the reef meets the land, approximate longitude 81° 07' 11" west, approximate latitude 19° 17' 35" north, thence in an easterly direction along the outer edge of the reef for a distance of approximately 1950 feet to reach approximate longitude 81° 06' 51" west, approximate latitude 19° 17' 35" north. Thence in a northerly direction to reach the coast at the southern boundary of Block No. 72C Parcel No. 193, approximate longitude 81° 06' 51" west, approximate latitude 19° 17' 40" north.

Thence in a south westerly direction along the coast to reach the starting point.

1H Radio Mast - Sand Bluff

Starting on the coast at the eastern boundary of Block No. 75A Parcel No. 130, approximate longitude 81° 05' 28" west, approximate latitude 19° 18' 34" north, thence in an easterly direction for a distance of approximately 5,200 feet to reach the outer edge of the reef just south of East End channel, approximate longitude 81° 04' 33" west, approximate latitude 19° 18' 34" north.

Thence in a north westerly direction along the outer edge of the reef for a distance of approximately 4,100 feet to reach approximate longitude 81° 04' 42" west, approximate latitude 19° 19' 13" north, thence in a westerly direction for a distance of approximately 2,900 feet to reach the coast at Sand Bluff on the eastern boundary of Block No. 75A Parcel No. 3, approximate longitude 81° 05' 13" west, approximate latitude 19° 19' 13" north.

Thence in a south westerly direction along the coast to reach the starting point.

1J Spotter Bay - Anchors Point

Starting on the coast at Spotter Bay Block No. 73A Parcel No. 1 approximate longitude 81° 05' 57" west, approximate latitude 19° 21' 12" north, thence in a westerly direction along the outer edge of the reef for a distance of approximately 11,600 feet to reach the coast at Anchors Point at the northern boundary of Block No. 65A Parcel No. 22, approximate longitude 81° 07' 58" west, approximate latitude 19° 21' 18" north.

Thence in an easterly direction along the coast to reach the starting point.