

CAYMAN ISLANDS



Supplement No. 1 printed with Gazette No. 16 of 1986.

**THE CUSTOMS LAW (SECOND REVISION)
THE CUSTOMS (QUEEN'S WAREHOUSE)
REGULATIONS, 1985**

CAYMAN ISLANDS
LAW SCHOOL

**THE CUSTOMS LAW (SECOND REVISION)
THE CUSTOMS (QUEEN'S WAREHOUSE) REGULATIONS,
1985**

In exercise of the powers conferred on the Governor in Council by section 2 and by paragraph (c) of section 73 of the Customs Law (Second Revision), the following Regulations are hereby made -

Citation.

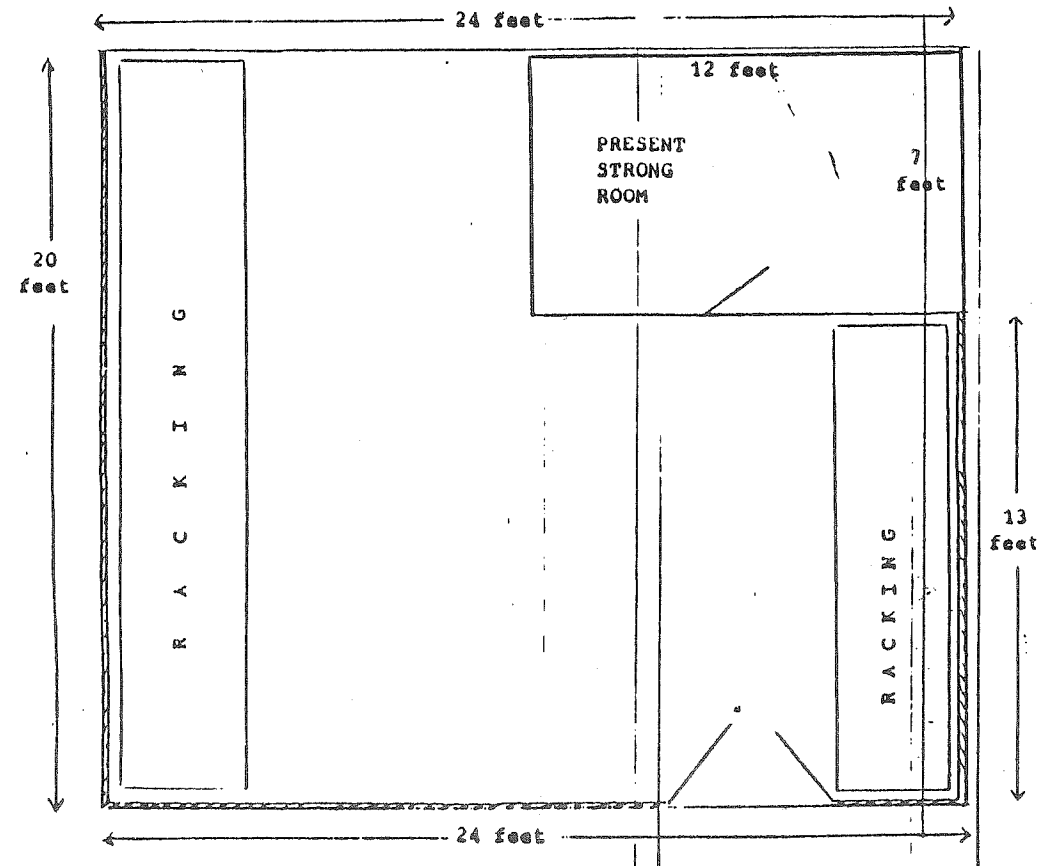
1. These Regulations may be cited as the Customs (Queen's Warehouse) Regulations, 1985.

Prescription of
Queen's Warehouse.

2. The land and building described in the Schedule is prescribed as the Queen's Warehouse for the deposit of goods of any class for the security thereof and the duty payable thereon.

SCHEDULE

All that the area of the Customs Warehouse at Owen Roberts International Airport, Grand Cayman, marked on the Plan depicted hereunder and being part of Parcel 20B 126.



Link chain fencing
14 feet high

Made in Council this 23rd day of April, 1985.

MONA N. JACKSON
Acting Clerk of the Executive Council